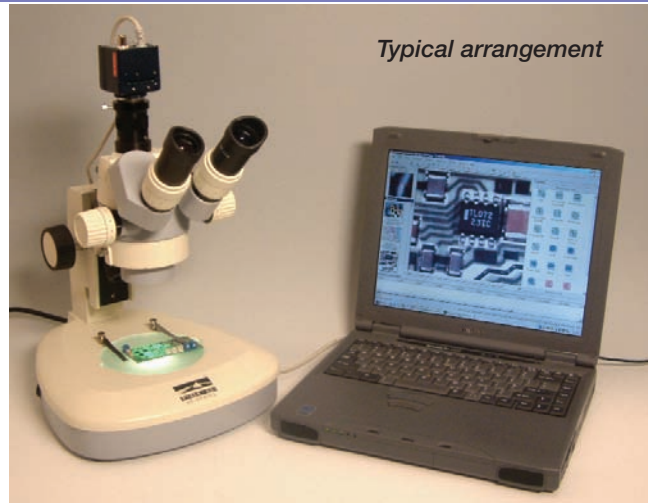


The XED is a highly affordable advanced digital microscope camera with 1280 x 1024 pixels high-resolution camera for inspection of fine detail. It utilizes USB technology that can produce a live image viewable on a computer monitor.

USB2.0 (High-speed USB) provides an expandable, plug & play serial interface that ensures a standard connection for peripheral devices. Compared to the transfer speed of 12 Mbps of USB1.1 (full-speed), USB 2.0 supports up to 480 Mbps (60MBytes/sec) for high-speed devices.

The XED is designed to have simple operation with calibration and live and off-line measurement, image database, measurement reporting, image processing and the powerful multiple images tiling (MIT) capability. MIT is especially useful if you need to acquire an image with high resolution over an extended area, but is limited by your camera's resolution or the microscope, which can only display part of the object at the required resolution. The individual images are aligned with sub-pixel accuracy. The multiple image alignment achieves this through intelligent pattern recognition techniques and plausibility checks within the overlap areas. The resulting image has the same resolution as the individual images but is larger, and its size is only limited by the amount of memory available. It has more lines and columns.

The camera can be used with most microscopes or optical systems using the available range of adaptors. It can be fitted to either the trinocular port or the eyepiece.



Camera Features Include:

| | |
|---|---|
| Imaging device : | 1/2"CMOS |
| Colour method : | Single-panel CMOS colour method |
| Max. resolution : | 1.3M pixel |
| Lens size : | 1/2"format |
| Scan mode : | Progressive |
| Pixel size : | 5.2 um x 5.2 um (6.65 mm x 5.32mm pixel areas) |
| S/N ratio : | 54dB |
| Sensitivity : | 1.8V/Lux-sec (550nm) |
| Electric shutter mode : | Manual 1/30-1/1800 |
| Shutter control : | Manual adjustment, software control |
| White balance : | Manual/auto, switchable |
| Synchro system : | Internal syschro |
| Flange back : | Manual adjustment |
| Lens mount : | C mount (Lens is NOT included) |
| Offset : | Manual adjustment, software control |
| Gain : | Manual adjustment, software control |
| Image Interface : | USB 2.0, digital output |
| Power supply : | DC5V, 0.3A (SELV) |
| Power : | <2.0W |
| Ambient temperature and humidity | : 0-35 C° (recommended), 80%(non-condensing) |
| Dimension and weight : | 51(W) x 59(H) x 67.5(D)mm, 30g approx |