

Laboratory reactor accessories cont.

LR 2000.3 Reactor vessel

Double-walled for LR 2000 P
(stand LR 2000.75)

Useful volume	2000 ml
Material	stainl.steel (AISI 316L)
Max. temperature	230°C



Product no	Description
13960/59	LR 2000.3
13960/60	LR 2000.4

LR 2000.4 Reactor vessel (without fig.)

Double-walled with bottom outlet valve,
for LR 2000 P (Stand LR 2000.75)

Accessories :

LR 2000.53 Stand lower set ,
LT 5.23 Hose adaptor (2 pieces required)
LT 5.20 Hose

LR 2000.53 Stand lower set

To raise the laboratory reactor vessels LR 2000.2
and LR 2000.4. Only in connection with LR 2000.70
and LR 2000.75



Product no	Description
13960/58	LR 2000.53

LR 2000.40 Shaft receptacle

To install the temperature sensors
PT 100.25 and PT 100.5

Material of seal	FFPM
------------------	------

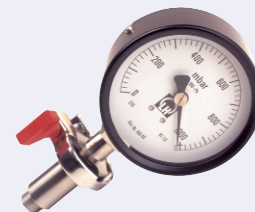


Product no	Description
13960/80	LR 2000.60

LR 2000.30 Vacuum gauge

Only for LR 2000 V
Alternative to the vacuum controller
VC 2 IKAVAC®

Material of seal	FFPM
Measuring range	0 - 1020 mbar
Measuring accuracy accto DIN 16005	Class 1
Max temperature	60°C

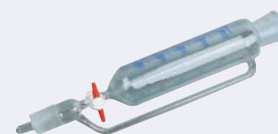


Product no	Description
13960/81	LR 2000.30

LR 2000.90 Drip funnel

For dosing, with ground joint NS 29.
Only for LR-2.ST and LR 2000 V

Volume	250 ml
--------	--------



Product no	Description
13960/82	LR 2000.90